



**SILVERSTONE**  
Experience is everything

International Circuit / 1.85  
miles

## 750 Motor Club Car Races

23<sup>rd</sup> / 24<sup>th</sup> August 2014

This meeting is organised by the 750 Motor Club Ltd governed by the General Competition Rules of the MSA, incorporating the provisions of the International Sporting Code of the FIA, additional Supplementary Regulations and any written instructions the organisers issue for the event.

These final instructions should be read in conjunction with any further instructions or bulletins issued by the organisers.

Contact: Giles Groombridge, 750MC, The Conservatory Suite, Donington Park, Castle Donington, Derby. DE74 2RP  
Tel: 01332 814548 Fax: 01332 811422 e-mail giles@750mc.co.uk

### 1 Permits

This event will be held under the following MSA Permit numbers:

International **N/A** National A **N/A** National B **N/A** Clubmans **80972**

### 2 Officials

MSA Steward	T. Farmer
Club Stewards	V. Ayres / I. Thompson
Senior Clerk of the Course	Andy Cox
Deputy Clerk of the Course	
Clerks of the Course	L. Spurr / N. Tanser
Assistant Clerk of the Course	
Trainee Clerk of the Course	Stephen Rose
Secretary of the Meeting	Giles Groombridge
Chief Scrutineer	Matthew Lambkin-Smith
Race Administration	Nicky Emmerson
Chief Timekeeper	Terry Stevens

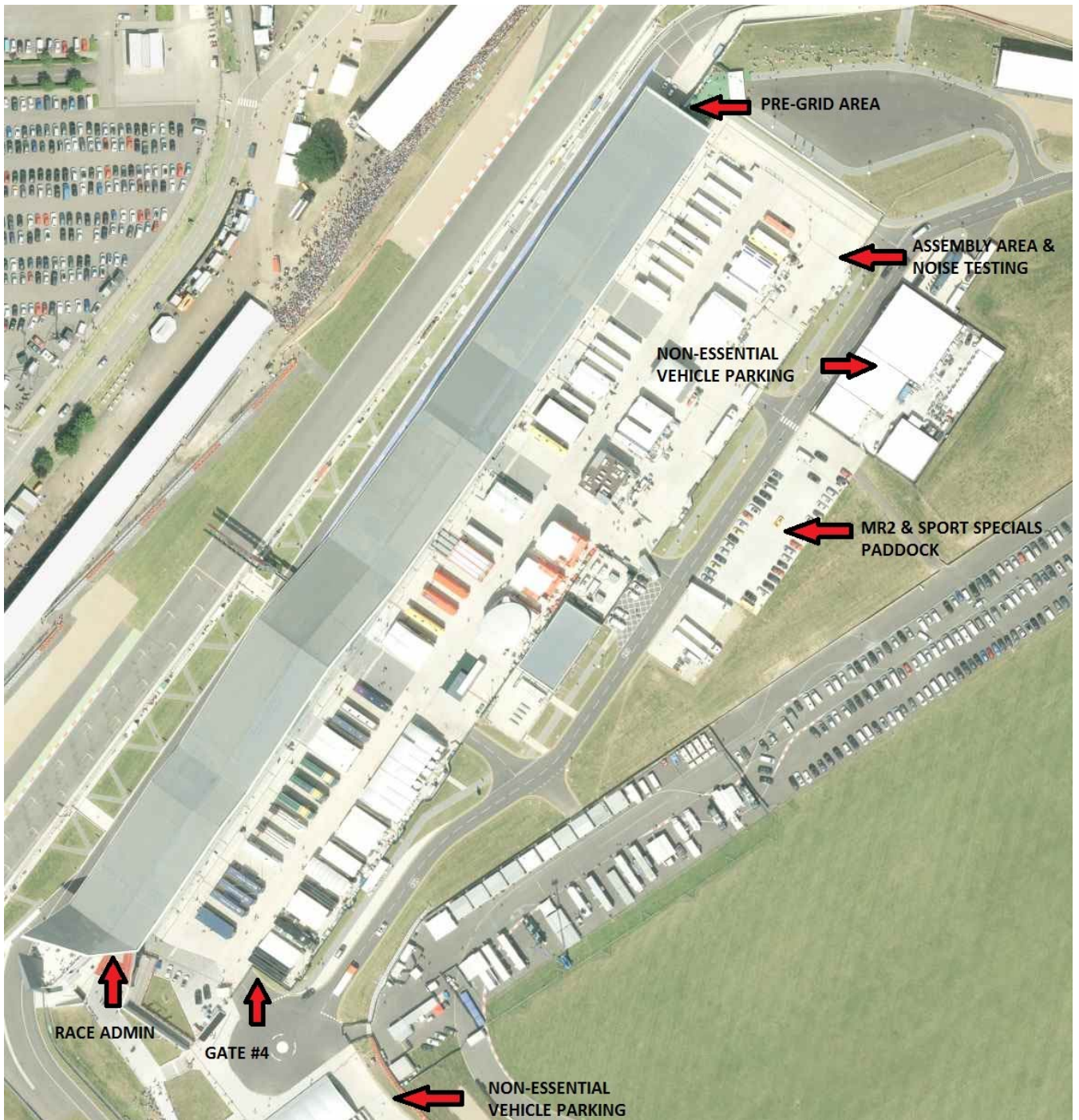
### 3 Passes

Tickets and passes will be distributed to competitors via the 750 Motor Club

For those competitors who have been allocated garages, please note that the rear of the garages must be kept clear to at least the electrical outlet pillars. **This is to ensure that you can access the Assembly Area from the rear of the garages.** Please note that under no circumstances are competitors to use the pitlane to access the Assembly Area.

All competitors will be issued with 1 x Vehicle Pass for access into the paddock, Access will be via Gate #4 only. The exception will be for competitors in Sport Specials and MR2 who will occupy a large section of tarmac external to the main paddock. Please ensure you park all private vehicles outside the perimeter fence of the Wing Paddock. This will ensure that there will be adequate space for all working vehicles/trailers.

Drivers who are only competing on Sunday are requested not to arrive until 7pm on Saturday to allow paddock space to be vacated. Drivers who are testing on Friday and not racing until Sunday will be made to move their vehicles if they do not vacate the main paddock on Friday evening.



**4 Venue Access**

Venue access times will be from 19:00 on Friday the 22<sup>nd</sup> of August. Access to the venue/circuit for competitors who have not been testing will be via the Main Gate on Friday 19:00 – 23:00hrs and from 07:00 on Saturday.

**5 Health & Safety**

At all times whilst in the confines of the venue competitors should comply with the instructions within this document.

**6 Pit & Paddock Areas**

**Any Competitor/Team who may have stationed themselves in the incorrect place in the paddocks and has refused to move when asked by a 750MC official or their co-ordinator, will be reported to the Clerk of the Course.**

**6.1 Engine/Noise Pollution:** Engines must not be run before 8:30hrs or after 18:00. On track, as per MSA regulations.

## Final Instructions – Silverstone 23<sup>rd</sup> / 24<sup>th</sup> August 2014

### 6.2 Paddock

- 6.2.1 Teams are responsible for the removal of waste oil & containers from the venue
- 6.2.2 All domestic rubbish must be placed in the bins provided. **Any scrap vehicle parts including tyres must be removed from the venue.**
- 6.2.3 Under no circumstances must any paddock surface be broken in any way i.e. tent pegs/stakes etc.
- 6.2.4 Hospitality is not permitted in the paddock/pit area without the express permission of the Circuit. The only exception to this is hospitality for competitors and official team personnel.
- 6.2.5 It is the responsibility of the teams to control any used or replacement tyres. These tyres are not permitted to be given to any members of the public and/or sponsors and guests and must be removed from the venue at the end of the event.
- 6.2.6 Teams are responsible for ensuring that members of the public do not wander through their pit garages and into the pit lane. The use of Tensa Barriers, post and rope or post and chain is recommended for when rear garage doors are left open.
- 6.2.7 Teams must either use cable protection to cover trailing cables or tape the cables to the ground all the way along their length, using hazard tape (clearly tape will only work in dry weather so ideally cable protection should be used).
- 6.2.8 Please be aware that there is a site speed limit of 20mph.

### 6.3 Pitlane

- 6.3.1 The outer lane or lanes are to be kept unobstructed to allow safe passage of cars at all times. The onus shall be on all drivers to take due care and drive at minimum speeds in the Pit Lane. **At the end of each practice session and races, teams are required to remove all equipment from the pit lane to allow the other series teams' access to pit lane.**
- 6.3.2 The pitlane speed limit for all sessions will be **60kph**
- 6.3.3 The Pit Signalling wall must be kept clear of all team personnel at the start of each race.
- 6.3.4 Refuelling in the pit lane is not permitted unless allowed for in the Championship/Series Regulations.
- 6.3.5 Children under the age of 16 years are not permitted in the pit lane area.

### 6.4 Support Vehicles

The use of vehicles is not permitted unless towing a trailer for the purpose of transporting ancillary motor race equipment in the pit & paddock area. No competitor may use a support vehicle in the pit road at any time unless authorised by a race official. Any misuse of "support vehicles" will be brought to the attention of the Senior Officials and appropriate action may be taken.

## 7 Signing On For Competitors

Sign on for competitors will be available from 4pm to 7pm on Friday the 22<sup>nd</sup> of August, otherwise please sign on 30 minutes prior to your scrutineering time (see timetable). Please do not go before your allocated time. Signing on will be on the 1st floor of the race control building in Meeting Room 2. Access to the office is via the stairwell by the side of Garage #1.

7.1 All Competitors/Entrants must provide at Signing On:

- (a) Competition Race Licence/ Entrants Licence (Where applicable)  
Competitors with Non MSA Competition Licences are reminded that under Article 18 of the International Sporting Code, written approval must be given by their ASN to compete in this event. Written approval will be checked at signing on. **Non-presentation of a valid licence carries an MSA fine of £67.**
- (b) Drivers Medical Certificate (if not incorporated in the Licence)
- (c) Valid Club Membership (where applicable)

**Drivers are reminded that licences, medicals and upgrade cards must be valid, bearing a recent photograph and be signed by the driver before presentation to the officials at Signing On. Without these they are not valid.**

7.2 It is the responsibility of the driver to collect their upgrade card after the event.

7.3 **If they have not already done so, drivers are requested to provide their transponder numbers at signing-on. for those without a transponder, units will be available to hire at the cost of £30 for the weekend.**

## 8 Scrutineering

All Scrutineering will take place at the times indicated on the timetable, unless advised otherwise; all cars must go to the scrutineering bay which will be located in Garage #1. Entrance to scrutineering will be via Garage 1 only, with the exit via the pitlane and back through Garage 2. For those testing on Friday, scrutineering will be available from 4pm to 7.30pm, in Garage #1, you are strongly advised to take advantage of this if present.

At Scrutineering drivers must provide:

- (a) Competition Car
- (b) Paperwork from 750MC Officials confirming driver has signed on.
- (c) Crash helmet, visor or goggles, gloves, boots and overalls
- (d) Vehicle Identification forms (if required)
- (e) MOT/road fund licence (if required)

**Noise testing will take place at this event on entry to the assembly area. All cars must report for noise testing prior to their first session on circuit. Competitors are advised to leave adequate time to ensure their car is noise tested prior to their first session. Noise limits are as per current MSA Regulations.**

## 9 Eligibility

In addition to the Championship/Series Eligibility Scrutineers, eligibility may be checked by a member of the MSA Technical Commission as listed in the MSA Officials' Yearbook Appendix 4(e).

## 10 Drivers Briefings

- (a) ALL Competitors **MUST** attend their respective drivers' briefings at the allotted time and location.

Class	Time	Location
Civic Cup	10:30am (Sun)	Meeting Room 4
MR2	10:30am (Sun)	Millers Oils Hospitality Area
Compact Cup	11:00am (Sun)	Compact Cup Hospitality Area

Attendance is **MANDATORY** and non-attendance or late attendance may be penalised by the Clerk of the Course. The organisers reserve the right to call subsequent briefings at any time, should they consider it necessary. Such briefings will be announced via bulletins and/ or paddock announcements.

- (b) **Any driver who has not raced before at the circuit in its current configuration under MSA car regulations must attend a Drivers Briefing PRIOR to going out to practice; these will be held at 7.45, 8.15, 8.45, 9.15 and 9.45 in Meeting Room 4, near to the signing on office. Failure to attend could result in a fine of £170.**

## 11 Circuit Access

**All competitors/cars (even those in the garages)** must report to the Assembly Area, which is located to the rear of the Wing Paddock behind Garage 41. There is no access to the Assembly Area via the pitlane. All cars in the garages must access the Assembly Area via the rear of their garages.

As the track cannot be accessed directly from the Assembly Area, all competitors in the Assembly Area will be moved forward into a Pre Grid Area prior to their session starting. For the races competitors should hold the grid formation as they have done in the Assembly Area whilst they enter the Pre Grid Area and the track.

## 12 Qualifying

Qualifying will take place as per the timetable. It is the driver's responsibility to be ready at least 20 minutes before their timetabled session. Scrutineering Labels must be affixed to the vehicle and clearly displayed before it is allowed onto the track. Drivers should go to the Assembly Area 20 minutes before published times unless otherwise instructed and then when directed by the course marshal they should proceed onto the circuit.

Double Header Races: Unless championship/series regulations stipulate otherwise, grids for the second race of a Double header event with only one qualifying session will be based on the second fastest qualifying times.

## 13 Race Start Procedure / Grids / Safety Car

All start procedures will be in accordance with the Championship/Series regulations. It is the competitor's responsibility to ensure that they are ready in good time. Under ideal conditions the racing programme may be brought forward by up to 30 minutes. Grids will be formed as per Championship/Series Regulations and the terms of the Circuit Licence.

Where races are set for a time duration, the Chequered flag will be shown to the race leader the first time he passes the Finish Line after the time has elapsed.

**13.1 Standing Start**

All cars will be lined up in grid order in the Assembly Area. Prior to your session starting, cars (still in grid order) will be moved to the Pre Grid Area in readiness to be released onto the circuit. In the Pre-Grid Area there will 30 second countdown to the starting signal. At the signal of the marshals the cars will be released onto the circuit. **The lap of the circuit from the Pre Grid Area to the grid will constitute the Green Flag Lap.** Once the grid is formed a 5 Second Board will be displayed and the red lights will be switched on. Between 2 and 7 seconds, the red lights will be switched off, signalling the start of the race.

**13.2 Rolling Start**

N/A.

**14 End Of Track Session Procedure**

**14.1 All Races**

At the end of each track session be it qualifying or the actual race, all vehicles must slow down after taking the chequered flag and leave the circuit via the Pitlane and then through Garages 1 & 2, proceed as directed by officials.

**14.2 Parc Ferme**

Parc Ferme for all races will be behind the Scrutineering Bay. Access to parc fermé is restricted to drivers only. Drivers under 18 must be accompanied in parc fermé by the parent or guardian who has signed on for the event. Parc Fermé conditions apply at all times after taking the chequered flag until cars are released by the scrutineers. No work may be carried out on any vehicle without the permission of a scrutineer or official. Failure to comply with the above, or with the instructions of any official, may result in penalties as per C 2.1.1 being applied.

**14.3**

At the end of your race, presentations will be carried out in accordance with championship/series regulations Please follow instructions of championship / series coordinators and Formula Reps etc. In the case where the presentation does not take place competitors should report to the Paddock/Race Secretaries office.

**15 Judges**

Judges may be appointed as MSA Competitors Yearbook [Q18].

**16 Race Day Information**

The organisers will try to run the programme as published, but they reserve the right to delay or bring forward event times to suit the conditions of the day. Copies of practice times, grid sheets, provisional results & official bulletins etc will be available from Race Administration.

**17 Race Stoppages**

If any race is 'red-flagged' twice, it will be re-scheduled to run as the last race of the day, time permitting.

**18 Special Circuit Notes**

**18.1 Paddock**

The roadways within the Paddock Area must be kept clear of all vehicles at all times. It is prohibited to park vehicles so that they are backed up against the Pit Garage doors.

**18.2 Illegal Driving**

All competitors are reminded that they are liable to exclusion from the meeting if any person associated with their team who is below the age at which a driving licence may be issued, is seen driving a motor vehicle of any type within the paddock, or any other part of the grounds.

**18.3 Animals**

No animals are permitted within the circuit grounds

**18.4 Paddock Bikes & Support Vehicles**

In conjunction with the Clubs regulations:

- Excessive speed or riding in a reckless or dangerous manner in areas open or areas available to the public is forbidden.
- Use of Paddock bikes and such equipment by children or someone not holding the appropriate

## Final Instructions – Silverstone 23<sup>rd</sup> / 24<sup>th</sup> August 2014

permit/driving licence and relevant insurance policies is forbidden.

- Paddock bikes and such equipment must not be driven in public spectator areas, and the number of passengers must not exceed the number of passenger seats/places provided.

Failure to meet with these requirements may result in removal from the venue.

### 18.5 Garages/Main Paddock

Please can all competitors ensure that they have vacated the inner paddock and garages by **7pm on Sunday**. Competitors wishing to stay overnight or to leave vehicles, motorhomes or trailers for collection are asked to contact the circuit to request permission.

### 18.6 Damage and Recovery from the Circuit

The circuit/club cannot be held liable for any damage that is caused in the course of removal of any vehicle from the circuit.

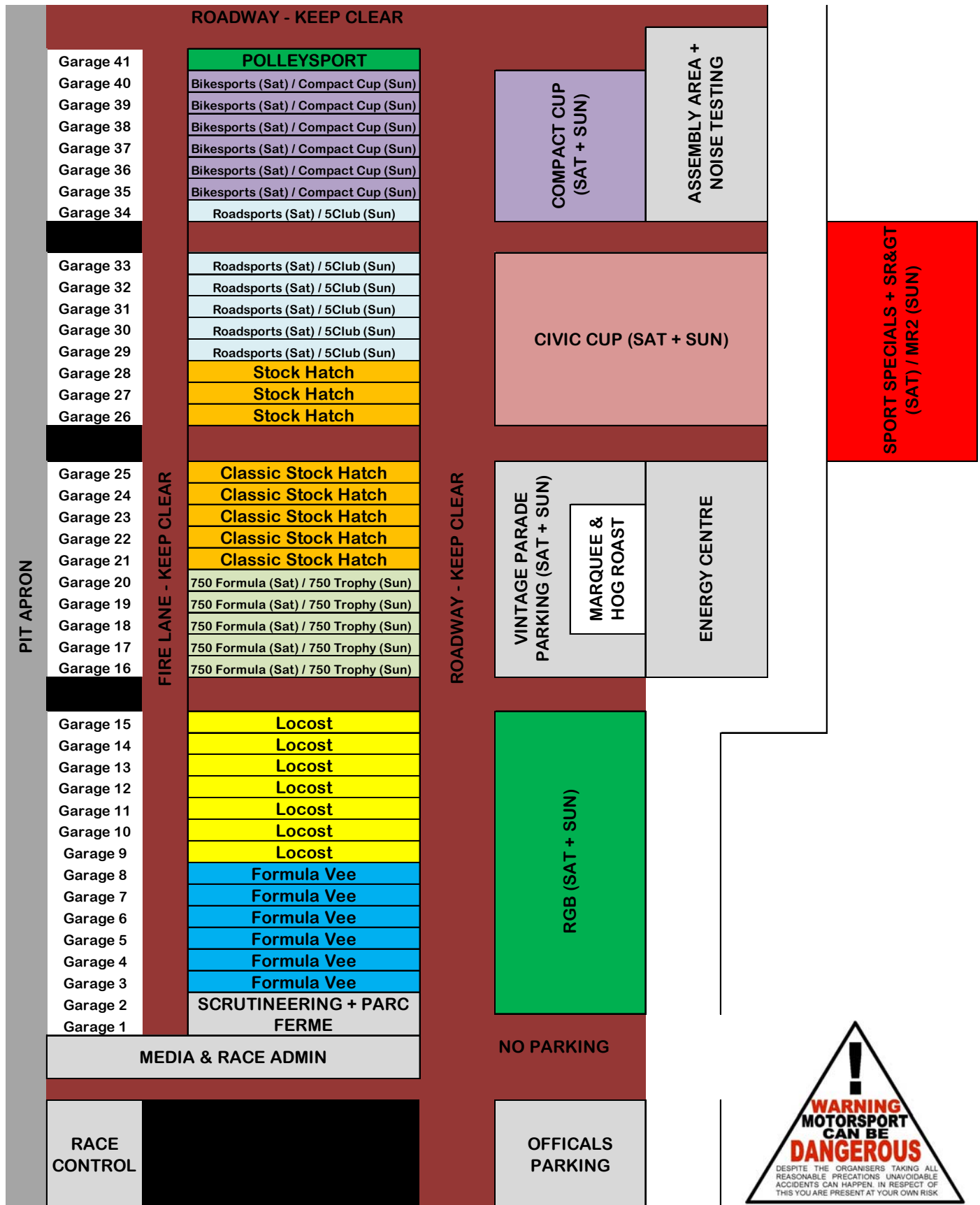
### 18.7 Fuel Station

There is no fuel station at the Wing..

## 19 Circuit Maps



20 Paddock Plan



**21 Timetable**

**Saturday**

**Practice (all 15 minute sessions, except R'Sports 20mins)**

**Scrutineer Time**

		Scrutineer	Time
1	Spire Sportscars Bike-Sports Championship	7.30	9.00
2	750MC Protech Sports Specials Championship / SR&GT	7.50	9.20
3	Premier Choice Group 750 Formula Championship	8.15	9.45
4	Disklok RGB Championship	8.35	10.05
5	Demon Tweeks/Yokohama Stock Hatch & Classic SH Championship	9.00	10.30
6	Demon Tweeks/Yokohama Locost Championship	9.30	10.50
7	Tillotson Formula Vee Championship	9.55	11.15
8	Cartek Roadsports Series	10.15	11.35

**Races (All Races Green Flag Lap from Assembly to Grid)**

**Duration Time**

		Duration	Time
1	Spire Sportscars Bike-Sports Championship	18mins+1 lap	12.00
2	750MC Protech Sports Specials Championship / SR&GT	13mins+1 lap	12.35

**Lunchbreak**

3	Premier Choice Group 750 Formula Championship	13mins+1 lap	1.40
4	Disklok RGB Championship	13mins+1 lap	2.10
5	Demon Tweeks/Yokohama Stock Hatch & Classic SH Championship	13mins+1 lap	2.35
6	Demon Tweeks/Yokohama Locost Championship	13mins+1 lap	3.05
7	Tillotson Formula Vee Championship	13mins+1 lap	3.30
8	Cartek Roadsports Series	45mins	4.00
9	Spire Sportscars Bike-Sports Championship	18mins+1 lap	4.55
10	750MC Protech Sports Specials Championship / SR&GT	13mins+1 lap	5.30

**Sunday**

**Practice (all 15 minute sessions)**

**Scrutineer Time**

		Scrutineer	Time
9	Millers Oils Toyota MR2 Championship	7.30	9.00
10	Safety Devices   Gaz Shocks Compact Cup	7.50	9.20
11	5Club Racing MX5 Cup / Tegiwa Civic Cup	8.20	9.45
12	750MC 750 Trophy Series	8.45	10.05

**Races (All Races Green Flag Lap from Assembly to Grid)**

**Duration Time**

11	Demon Tweeks/Yokohama Stock Hatch & Classic SH Championship	13mins+1 lap	10.30
12	Demon Tweeks/Yokohama Locost Championship	13mins+1 lap	11.10
13	Millers Oils Toyota MR2 Championship	13mins+1 lap	11.40
14	Safety Devices   Gaz Shocks Compact Cup	13mins+1 lap	12.10
15	Tegiwa Civic Cup	13mins+1 lap	12.40

**Lunchbreak + Historic Car Parade**

16	5Club Racing MX5 Cup	13mins+1 lap	1.55
17	Disklok RGB Championship	13mins+1 lap	2.25
18	Tillotson Formula Vee Championship	13mins+1 lap	2.55
19	750MC 750 Trophy Series	13mins+1 lap	3.25
20	Millers Oils Toyota MR2 Championship	13mins+1 lap	3.55
21	Safety Devices   Gaz Shocks Compact Cup	13mins+1 lap	4.25
22	Tegiwa Civic Cup	13mins+1 lap	4.55
23	5Club Racing MX5 Cup	13mins+1 lap	5.25

**Yokohama Tyre Supplies:**

George Polley will be in attendance at this meeting and can supply and fit any Yokohama tyres you pre-order - 01354 688111.





## Final Instructions – Silverstone 23<sup>rd</sup> / 24<sup>th</sup> August 2014

Races 1 & 9			Race 3		2		Matt Rozier	
Bikesports			750 Formula		4		Andy Philpotts	
					7		Derek Rozier	
0	B	Will Brown	2		Chris Gough	13	M. Williamson	
1	B	Tim Gray	5		Bob Simpson	14	Andrew Thorpe	
7	C	Julian Griffiths	6		Bill Cowley	21	Paul Rozier	
16	A	Bob Scanlon	7		Mick Harris	32	Mervyn Beckett	
20	A	Mark Conroy	8		Bill Rutter	34	Ben Ward	
23	B	Matt Carter	9		Mark Glover	37	Keith Morgan	
24	A	Michael Jolley	15	B	Graham Rice	57	Imran Khan	
25	B	James Breakell	17	B	D. Bartholomew	66	Gary Campbell	
26	A	Brent Hill	27		Sue Harris	67	M. Stubington	
29	A	Adrian Reynard	33		Billy Albone	71	Pip Hammond	
33	A	Richard Hardie	43	B	Ian Barley	79	Andrew Lightstead	
38	A	Gary Paterson	46		Peter Bove	87	Stewart Place	
57	B	Oliver Cox	75		Rod Hill	88	Martin Cayzer	
58	A	C. Harvey-Kelly	77	B	Dick Hartle	90	Martyn Fowdrey	
66	A	Steven Gore	85		Robin Gearing	91	Chris Jones	
68	A	Martin Phillipson				95	Edward Cooper	
77	A	Gary Baxter	Races 4 & 17			99	Gavin Johnson	
88	C	Richard Wise	RGB					
Races 2 & 10			1	R	Matt Higginson	9	Steven Powlesland	
Sport Specials			2	F	Austen Greenway	22	Steven Laidlaw	
			3	F	Paul Rickers	23	Jon Hobbs	
1	B	Colin Benham	4	R	Alastair Boulton	28	Shayne Deegan	
2	A	Clive Hudson	5	R	John Cutmore	45	Carl Swift	
3	A	Paul Boyd	6	R	Scott Mittell	48	Lee Deegan	
4	C	Stephen Lansley	11	F	Stephen Malyon	54	Tom Bell	
6	A	Nigel Brown	12	R	David Wale	58	Justin Drury	
7	A	Anton Landon	13	F	James Walker	63	Philip Wright	
9	C	Patrick Mortell	21	R	Kelvin Rawles	74	Gary Bayton	
11	C	John Moore	22	F	Kevin Bolton	83	James Hayden	
12	B	Adrian Cooper	25	F	Jeremy Tetley	121	Paul Newton	
17	C	Edward Ives	27	R	Jason Stowe	179	Martin Wilson	
19	B	Martin Buckland	28	F	Rew Chapple	Races 6 & 13		
22	C	Martin Tyman	30	R	Oliver Hewitt	Locost		
24	B	Paul Taberner	31	F	Colin Spicer			
26	B	Alan Robinson	33	R	Bob Mortimer	2	Lee Bankhurst	
27	A	David Roberts	34	F	Stephen Dean	3	Richard Jenkins	
32	B	Paul Cooper	36	R	Duncan Horlor	5	Paul Bryant	
38	B	Bridgette Smart	41	R	N.Constable-Berry	6	Tim Neat	
42	C	Darren Griffin	43	R	Paul Rogers	7	S.StaffordAtkinson	
46	B	Paul Murphy	44	R	Mark Betts	9	Tom Robinson	
51	C	Paul Collingwood	45	R	Ian Kempson	11	Victoria Baldwin	
55	B	Mark Hextall	49	R	Tony Gaunt	12	Shaun Brame	
58	C	Micky Scott	50	R	Tim Hoverd	13	Nick Selby	
91	A	Andrew Sterling	52	F	Daniel Bromilow	16	Dave Berry	
96	C	Nick Holden	63	R	Colin Chapman	19	Ian Allee	
SR&GT			68	R	Adrian Moore	21	Ryan Munt	
			72	R	Jonathan McGill	22	James McAllister	
			77	R	John Megarry	25	Jack Coveney	
21	A	Bernard Foley	84	R	Robert Gardiner	27	Danny Andrew	
54	B	Robert Frost	87	F	Andrew Nelson	28	Mark Robert	
60		Mark Aldridge	88	F	David Watson	30	Kevin Wernham	
70	A	Cheng Lim	Races 5 & 12			32	Thomas Brooks	
73	B	Mark Bowd	Stock Hatch & Classic Stock Hatch			33	Glenn Boyer	
83	C	Phil Walker				34	Trevor Faunch	
84	C	Peter Samuels				35	Ted Shepherd	
90	A	Chris Tilly	1		Lee Scott	40	Sean Hooson	



**Final Instructions – Silverstone 23<sup>rd</sup> / 24<sup>th</sup> August 2014**

56	Stephen Roberts
57	Mark Skeats
59	Jim Benson
60	Chris Platt
65	Simon Roche
69	Simon Bastiman
71	Adam Read
77	David Drinkwater
81	Neil Roche
84	Scott Lawson
88	James Nutbrown
90	Nicholas Hill
95	Dean Blackburn

**Races 16 & 23  
5Club**

7	Jason Greatrex
13	Scott Leach
47	Stephen Craggs
68	Thomas Pughe
69	James Rogers
74	Sam Gendy
75	Nick Le Doyen
76	Brian Chandler
77	Grant Williamson
79	James Canfer
86	Daniel Stewart
91	Jack Sycamore
99	M. Chambers
131	Nigel Garrett

**Race 20  
750 Trophy**

3	C	Cliff Ringrose
5	C	Michael Harvey
13	C	Gregan Thruston
20	A	Ian Grant
21	A	A.Frayling-Cork
22	A	Charlie Plain-Jones
26	A	Mike Whitby
30	A	Tim Myall
32	A	David Whetton
42	C	Martin Kemp
52	C	Andy Schultz
62	C	Helen Gilfillan
67	C	Barry Pike
71	A	Chris Pearson
75	A	Mike Peck
99	C	Christian Pedersen