



International Circuit / 1.85 miles

750 Motor Club Car Races

11th/ 12th August 2018

This meeting is organised by the 750 Motor Club Ltd governed by the General Competition Rules of the MSA, incorporating the provisions of the International Sporting Code of the FIA, additional Supplementary Regulations and any written instructions the organisers issue for the event.

These final instructions should be read in conjunction with any further instructions or bulletins issued by the organisers.

Contact: Giles Groombridge, 750MC, Donington Park, Castle Donington, Derby. DE74 2RP
Tel: 01332 814548 Fax: 01332 811422 e-mail giles@750mc.co.uk

1 Permits

This event will be held under the following MSA Permit numbers:

International	N/A	National B	108793	C'mans Endurance	106135	Clubmans	106134
---------------	-----	------------	--------	---------------------	--------	----------	--------

2 Officials

MSA Steward	David Evans
Club Stewards	Ian Thompson / Sian Atkinson
Senior Clerk of the Course	Lynne Spurr
Deputy Clerk of the Course	
Clerks of the Course	A. Cox / V.Ayres
Assistant Clerk of the Course	
Trainee Clerk of the Course	D. Ellwood
Secretary of the Meeting	Giles Groombridge
Chief Scrutineer	Bob Blackmore
Race Administration	Nicky Emmerson / James Winstanley
Chief Timekeeper	Terry Stevens

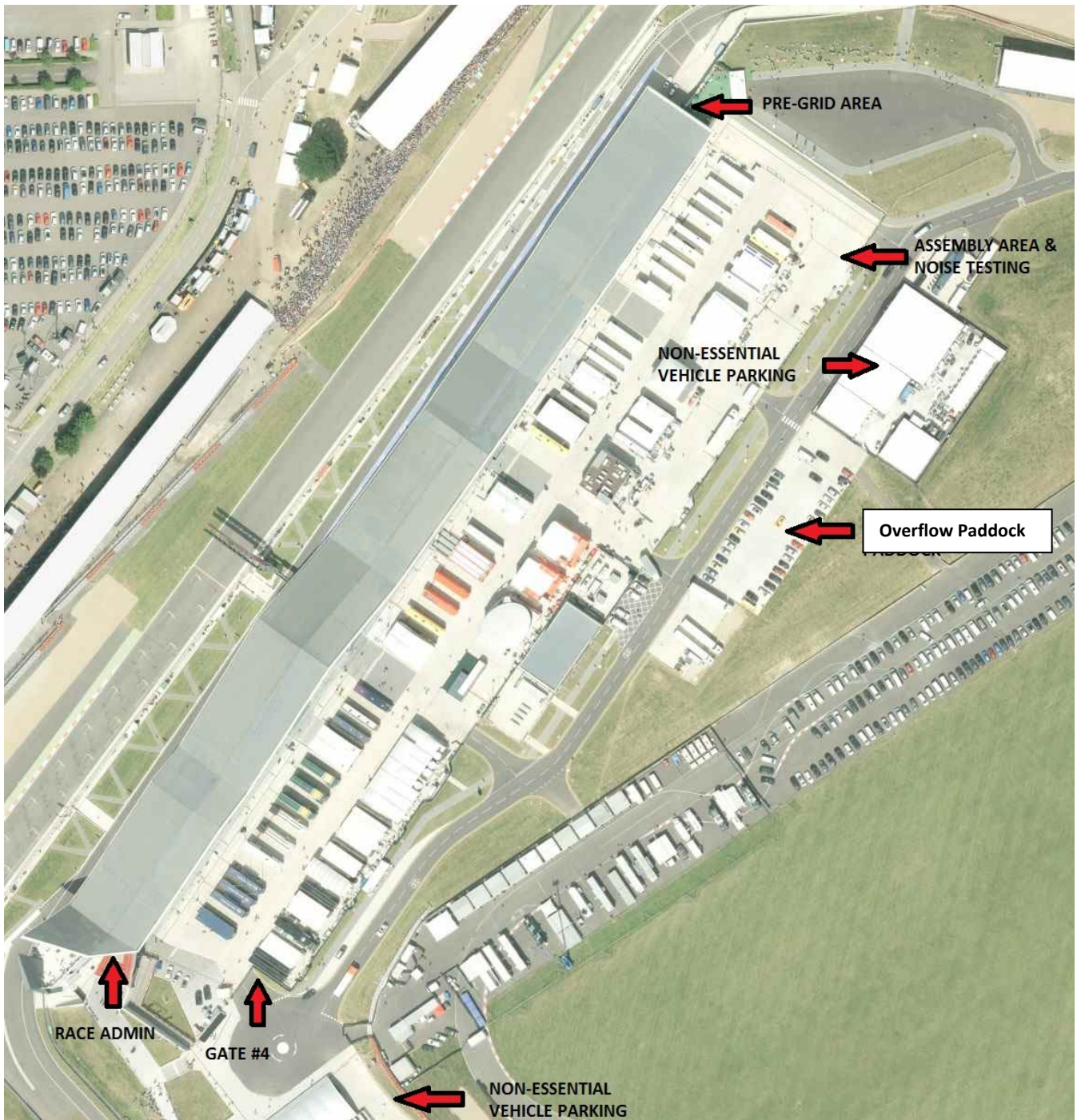
3 Passes

Tickets and passes will be distributed to competitors via the 750 Motor Club

For those competitors who have been allocated garages, please note that the rear of the garages must be kept clear to at least the electrical outlet pillars. **This is to ensure that you can access the Assembly Area from the rear of the garages.** Please note that under no circumstances are competitors to use the pitlane to access the Assembly Area.

All competitors will be issued with 1 x Vehicle Pass for access into the paddock, Access will be via Gate #4 only. The exception will be for competitors in Civic Cup who will occupy a large section of tarmac external to the main paddock. Please ensure you park all private vehicles outside the perimeter fence of the Wing Paddock. This will ensure that there will be adequate space for all working vehicles/trailers.

Drivers who are only competing on Sunday are requested not to arrive until 7pm on Saturday to allow paddock space to be vacated. **Drivers who are testing on Friday and not racing until Sunday will be made to move their vehicles from the garages if they do not vacate them on Friday evening.** Limited parking at the rear of the paddock has been made available (see Overflow Parking on the plan) for those who are testing on Friday and returning on Sunday.



4 Venue Access

Venue access times will be from 19:00 on Friday the 10th of August. Access to the venue/circuit for competitors who have not been testing will be via the Main Gate on Friday 19:00 – 23:00hrs and from 07:00 on Saturday.

5 Health & Safety

At all times whilst in the confines of the venue competitors should comply with the instructions within this document.

6 Pit & Paddock Areas

Any Competitor/Team who may have stationed themselves in the incorrect place in the paddocks and has refused to move when asked by a 750MC official or their co-ordinator, will be reported to the Clerk of the Course.

6.1 Engine/Noise Pollution: Engines must not be run before 8:30hrs or after 18:00. On track, as per MSA regulations.

6.2 Paddock

- 6.2.1 Teams are responsible for the removal of waste oil & containers from the venue
- 6.2.2 All domestic rubbish must be placed in the bins provided. **Any scrap vehicle parts including tyres must be removed from the venue.**
- 6.2.3 Under no circumstances must any paddock surface be broken in any way i.e. tent pegs/stakes etc.
- 6.2.4 Hospitality is not permitted in the paddock/pit area without the express permission of the Circuit. The only exception to this is hospitality for competitors and official team personnel.
- 6.2.5 It is the responsibility of the teams to control any used or replacement tyres. These tyres are not permitted to be given to any members of the public and/or sponsors and guests and must be removed from the venue at the end of the event.
- 6.2.6 Teams are responsible for ensuring that members of the public do not wander through their pit garages and into the pit lane. The use of Tensa Barriers, post and rope or post and chain is recommended for when rear garage doors are left open.
- 6.2.7 Teams must either use cable protection to cover trailing cables or tape the cables to the ground all the way along their length, using hazard tape (clearly tape will only work in dry weather so ideally cable protection should be used).
- 6.2.8 Please be aware that there is a site speed limit of 20mph.

6.3 Pitlane

- 6.3.1 The outer lane or lanes are to be kept unobstructed to allow safe passage of cars at all times. The onus shall be on all drivers to take due care and drive at minimum speeds in the Pit Lane. **At the end of each practice session and races, teams are required to remove all equipment from the pit lane to allow the other series teams' access to pit lane.**
- 6.3.2 The pitlane speed limit for all sessions will be **60kph**
- 6.3.3 The Pit Signalling wall must be kept clear of all team personnel at the start of each race.
- 6.3.4 Refuelling in the pit lane is not permitted unless allowed for in the Championship/Series Regulations.
- 6.3.5 Children under the age of 16 years are not permitted in the pit lane area.

6.4 Support Vehicles

The use of vehicles is not permitted unless towing a trailer for the purpose of transporting ancillary motor race equipment in the pit & paddock area. No competitor may use a support vehicle in the pit road at any time unless authorised by a race official. Any misuse of "support vehicles" will be brought to the attention of the Senior Officials and appropriate action may be taken.

7 Signing On For Competitors

Sign on for competitors will be available from 4pm to 7.00pm on Friday the 10th of August, otherwise please sign on 30 minutes prior to your scrutineering time (see timetable). Please do not go before your allocated time. Signing on will be on the 1st floor of the race control building in Meeting Room 2. Access to the office is via the stairwell by the side of Garage #1.

- 7.1 All Competitors/Entrants must provide at Signing On:
 - (a) Competition Race Licence/ Entrants Licence (Where applicable)
Competitors with Non MSA Competition Licences are reminded that under Article 18 of the International Sporting Code, written approval must be given by their ASN to compete in this event. Written approval will be checked at signing on. **Non-presentation of a valid licence carries an MSA fee of £70.**
 - (b) Drivers Medical Certificate (if not incorporated in the Licence)
 - (c) Valid Club Membership (where applicable)

Drivers are reminded that licences, medicals and upgrade cards must be valid, bearing a recent photograph and be signed by the driver before presentation to the officials at Signing On. Without these they are not valid.

- 7.2 It is the responsibility of the driver to collect their upgrade card after the event.

- 7.3 **If they have not already done so, drivers are requested to provide their transponder numbers at signing-on. For those without a transponder, the Club has a limited number of units to hire at the cost of £30 for the weekend. All hired transponders must be returned to Race Administration within 30 minutes of the finish of the last race of the weekend. Failure to return a hired transponder may mean that there may be insufficient transponders available at the next meeting.**

8 Scrutineering

All Scrutineering will take place at the times indicated on the timetable, unless advised otherwise; all cars must go to the scrutineering bay which will be located in Garage #1. Entrance to scrutineering will be via Garage 1 only, with the exit via the pitlane and back through Garages 2/3. For those testing on Friday or arriving early, scrutineering will be available from 4.30pm to 7.30pm, in Garage #1, you are strongly advised to take advantage of this if present.

At Scrutineering drivers must provide:

- (a) Competition Car
- (b) Paperwork from 750MC Officials confirming driver has signed on.
- (c) Crash helmet, visor or goggles, gloves, boots, FHR and overalls
- (d) Vehicle Identification forms (if required)
- (e) MOT/road fund licence (if required)

Noise testing will take place at this event on entry to the assembly area. All cars must report for noise testing prior to their first session on circuit. Competitors are advised to leave adequate time to ensure their car is noise tested prior to their first session. Noise limits are as per current MSA Regulations.

9 Eligibility

In addition to the Championship/Series Eligibility Scrutineers, eligibility may be checked by a member of the MSA Technical Commission as listed in the MSA Officials' Yearbook Appendix 4(d).

10 Drivers Briefings

- (a) ALL Competitors **MUST** attend their respective drivers' briefings at the allotted time and location.

Class	Time	Location
Porsche Club GB	10:15 (Sat)	Auditorium
Bikesports	10:45 (Sat)	Auditorium
Club Enduro	14:30 (Sat)	Auditorium
MR2C	11:30 (Sun)	Gala Performance Social Hub

Attendance is **MANDATORY** and non-attendance or late attendance may be penalised by the Clerk of the Course. The organisers reserve the right to call subsequent briefings at any time, should they consider it necessary. Such briefings will be announced via bulletins and/ or paddock announcements.

- (b) Any driver who has not raced before at the circuit in its current configuration under MSA car regulations must attend a Drivers Briefing **PRIOR** to going out to practice; these will be held at 7.45, 8.15, 8.45, 9.15 on Saturday and Sunday in Meeting Room 4, near to the signing on office. Failure to attend could result in a fine of £185.

11 Circuit Access

All competitors/cars (including those in the garages) must report to the Assembly Area, which is located to the rear of the Wing Paddock behind Garage 41. There is no access to the Assembly Area via the pitlane. All cars in the garages must access the Assembly Area via the rear of their garages.

As the track cannot be accessed directly from the Assembly Area, all competitors in the Assembly Area will be moved forward into a Pre Grid Area prior to their session starting. For the races competitors should hold the grid formation as they have done in the Assembly Area whilst they enter the Pre Grid Area and the track.

12 Qualifying

Qualifying will take place as per the timetable. It is the driver's responsibility to be ready at least 20 minutes before their timetabled session. Scrutineering Labels must be affixed to the vehicle and clearly displayed before it is allowed onto the track. Drivers should go to the Assembly Area 20 minutes before published times unless otherwise instructed and then when directed by the course marshal they should proceed onto the circuit.

Double Header Races: Unless championship/series regulations stipulate otherwise, grids for the second race of a Double header event with only one qualifying session will be based on the second fastest qualifying times.

13 Race Start Procedure / Grids / Safety Car

All start procedures will be in accordance with the Championship/Series regulations. It is the competitor's responsibility to ensure that they are ready in good time. Under ideal conditions the racing programme may be brought forward by up to 30

Final Instructions – Silverstone 11th/ 12th August 2018

minutes. Grids will be formed as per Championship/Series Regulations and the terms of the Circuit Licence.

Where races are set for a time duration, the Chequered flag will be shown to the race leader the first time he passes the Finish Line after the time has elapsed.

13.1 Standing Start

All cars will be lined up in grid order in the Assembly Area. Prior to the session starting, cars (still in grid order) will be moved to the Pre Grid Area in readiness to be released onto the circuit. In the Pre-Grid Area there will be a 30 second countdown to the starting signal. At the signal of the marshals the cars will be released onto the circuit. **The lap of the circuit from the Pre Grid Area to the grid will constitute the Green Flag Lap.** Once the grid is formed a 5 Second Board will be displayed and the red lights will be switched on. Between 2 and 7 seconds, the red lights will be switched off, signalling the start of the race.

13.2 Rolling Start

Cars will be pre-gridded in the Assembly area then be moved to the Pre Grid Area in readiness to be released onto the circuit. In the Pre-Grid Area there will be a 30 second countdown to the starting signal followed by the start of the Rolling lap behind a Lead Car. **The lap of the circuit from the Pre Grid Area to the grid will constitute the Green Flag Lap.** Once the Lead Car has returned to the pits the red lights will switch off – signalling the start of the race. Please note that should there be a change of weather conditions from dry to wet since qualifying, drivers will be permitted an additional reconnaissance lap behind the Lead Car.

Whilst on the Rolling Lap the Lead Car Driver or Observer or a Judge of Fact will assess the grid and if they are not satisfied that the formation is correct, they may elect to do a further Rolling Lap prior to the start to allow drivers to regain their correct positions. If after the Lead Car has pulled into the Pit Lane, the Starter judges that the grid is not in good formation as it approaches the Startline, he may leave the Start Lights at Red. In these circumstances, all cars should proceed slowly round the circuit and stop back in position on the grid. The Start procedure will be recommenced at the 1 minute signal. It is the driver's responsibility to insure they are fully aware of the full start procedures in section 2.6 of their Championship Regulations. The race timing will commence from the start of the first start irrespective of whether it is aborted or not.

The following Championship/Series will use a Rolling Start:

Cartek Club Enduro Championship & Bikesports ONLY

13.3 Safety Car Intervention (Club Enduro & Porsche Club GB ONLY)

The Clerk of the Course will have the facility for the use of the safety car in the **Porsche Club GB & Club Enduro qualifying and race.** It is the driver's responsibility to make sure they are fully aware of these regulations. The safety car will access and exit the circuit via the pit lane and safety car boards will be shown from the Start line.

14 End Of Track Session Procedure

14.1 All Races

At the end of each track session be it qualifying or the actual race, all vehicles must slow down after taking the chequered flag and leave the circuit via the Pitlane and then through Garages 1 & 2, proceed as directed by officials or marshals.

14.2 Parc Ferme

Parc Ferme for all races will be behind the Scrutineering Bay. Access to parc fermé is restricted to drivers only. Drivers under 18 must be accompanied in parc fermé by the parent or guardian who has signed on for the event. Parc Fermé conditions apply at all times after taking the chequered flag until cars are released by the scrutineers. No work may be carried out on any vehicle without the permission of a scrutineer or official. Failure to comply with the above, or with the instructions of any official, may result in penalties as per C 2.1.1 being applied.

14.3

At the end of your race, presentations will be carried out in accordance with championship/series regulations. Please follow instructions of championship / series coordinators and Formula Reps etc. In the case where the presentation does not take place competitors should report to the Paddock/Race Secretaries office.

15 Judges

Judges may be appointed as MSA Competitors Yearbook [Q18].

16 Race Day Information

Final Instructions – Silverstone 11th/ 12th August 2018

The organisers will try to run the programme as published, but they reserve the right to delay or bring forward event times to suit the conditions of the day. Copies of practice times, grid sheets, provisional results & official bulletins etc will be available from Race Administration.

17 Race Stoppages

If any race is 'red-flagged' twice, it will be re-scheduled to run as the last race of the day, time permitting.

18 Special Circuit Notes

18.1 Paddock

The roadways within the Paddock Area must be kept clear of all vehicles at all times. It is prohibited to park vehicles so that they are backed up against the Pit Garage doors.

18.2 Illegal Driving

All competitors are reminded that they are liable to disqualification from the meeting if any person associated with their team who is below the age at which a driving licence may be issued, is seen driving a motor vehicle of any type within the paddock, or any other part of the grounds.

18.3 Animals

No animals are permitted within the circuit grounds

18.4 Paddock Bikes & Support Vehicles

In conjunction with the Clubs regulations:

- Excessive speed or riding in a reckless or dangerous manner in areas open or areas available to the public is forbidden.
- Use of Paddock bikes and such equipment by children or someone not holding the appropriate permit/driving licence and relevant insurance policies is forbidden.
- Paddock bikes and such equipment must not be driven in public spectator areas, and the number of passengers must not exceed the number of passenger seats/places provided.

Failure to meet with these requirements may result in removal from the venue.

18.5 Garages/Main Paddock

Please can all competitors ensure that they have vacated the inner paddock and garages by **7pm on Sunday**. Competitors wishing to stay overnight or to leave vehicles, motorhomes or trailers for collection are asked to contact the circuit to request permission.

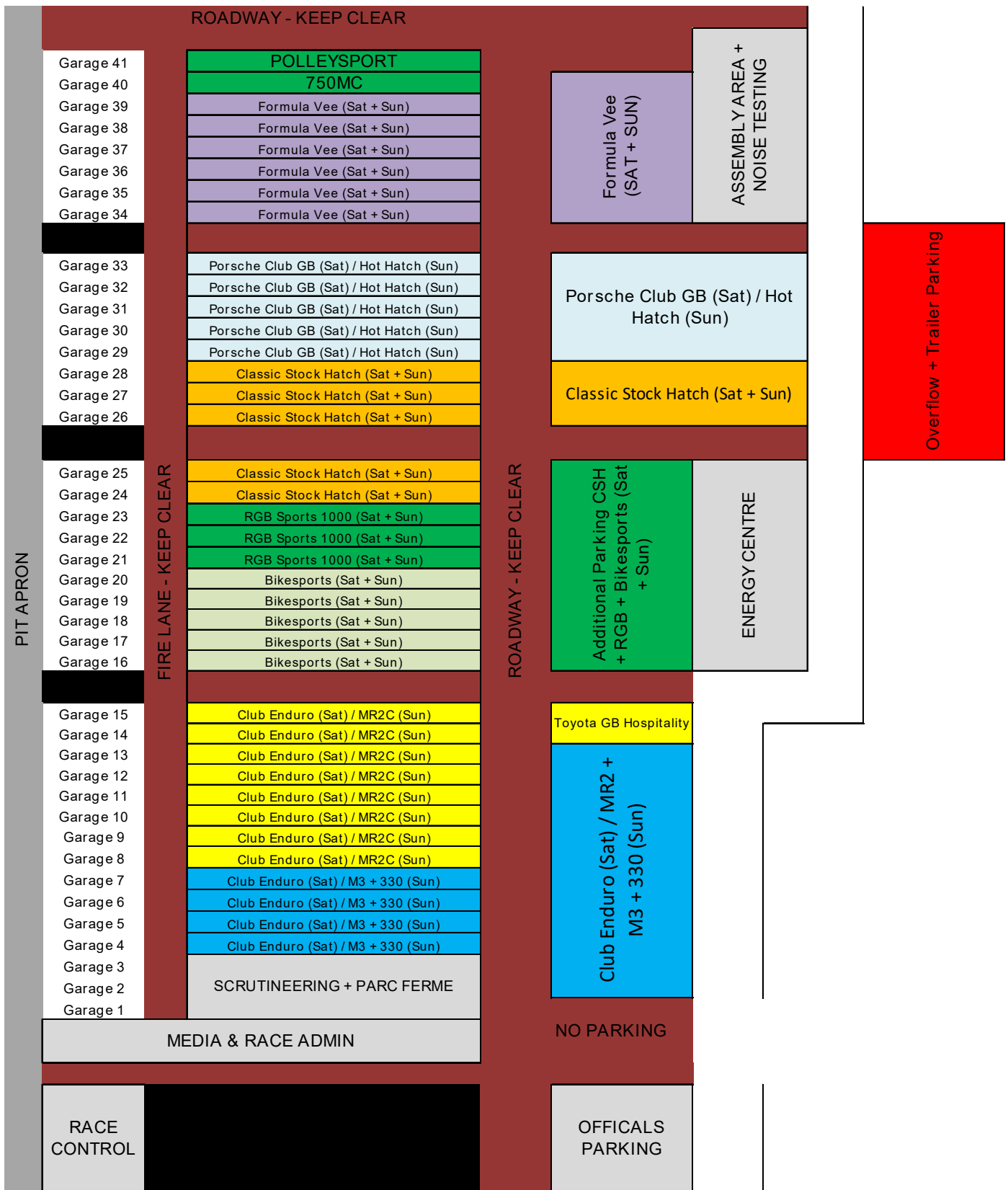
18.6 Damage and Recovery from the Circuit

The circuit/club cannot be held liable for any damage that is caused in the course of removal of any vehicle from the circuit.

18.7 Fuel Station

There is no fuel station at the Wing, however the fuel station in the National paddock (access via Copse tunnel). will be open and manned from 08.00-17.00 each day, outside of these times it operates on a 24 hour card payment system.





21 Garage Allocation

Below is the Garage Allocation for Club Enduro and Bikesports Competitors:

Garage 20		Tim Gray Motorsport
Garage 19		Puremotion / T. Barwell
Garage 18		P. Cooper / C. Bell / M. Grason / J.Lock / D. Keith
Garage 17		R. Stables / J. Stables / R. Hardie / C. Adrian / B. Henderson
Garage 16		S. Peters / A. Reynard / A. Hicklin / D. Carter / B. Crawley
Garage 15		L. Bidgway / L. Sharples / D. Roberts / S. Hewson
Garage 14		M. Lloyd-Jones / S. Nadarajan / W. Ashmore / C. Brown
Garage 13		M. Faizey / P. Sheard / G. Gouriet / C. Cooper
Garage 12		R. Carter / A. Winchester / J. Cruttenden / H. Buckley
Garage 11		C. Readshaw / A. Baylie / T. Hobson / M. Parsons
Garage 10		S. Ferguson / S. Cheetham / J. Munro / G. McMurchie
Garage 9		C. Campbell / D. Downie / M. Downie / C. Gillespie
Garage 8		N. Grove / J. McBride / B. Salmon / R. Hinde
Garage 7		M. James / M. Harris / J. Leak / R. Harrison / M. Morton
Garage 6		R. Clarke / K. Dengate / R. Kearney / S. Daburn
Garage 5		D. Ball / S. Cunniffe / A. Marston / B. Forbes
Garage 4		L. Sedzikowski / S. Ping Yuan / M. Wallis / M. Duffy
Garage 3		SCRUTINEERING + PARC FERME
Garage 2		
Garage 1		

22 Timetable

Saturday			
Practice (all 15 minute sessions, except Club Enduro 30mins)		Scrutineer	Time
1	<i>Porsche Club GB Championship</i>	7.30	9.00
2	<i>Aim Technologies Bikesports Championship</i>	7.55	9.25
3	<i>Heritage Parts Centre Formula Vee Championship</i>	8.20	9.45
4	<i>Endurance Financial RGB Sports 1000 Championship</i>	8.35	10.10
5	<i>Demon Tweeks/Yokohama Classic Stock Hatch Championship</i>	9.00	10.30
6	<i>Cartek Club Enduro Championship</i>	9.30	10.55
Races (ALL races green flag lap from assembly area)		Duration	Time
1	<i>Porsche Club GB Championship</i>	25mins	11.35
2	<i>Aim Technologies Bikesports Championship</i>	18mins+1 lap	12.15
3	<i>Heritage Parts Centre Formula Vee Championship</i>	13mins+1 lap	12.50
Lunchbreak			
4	<i>Endurance Financial RGB Sports 1000 Championship</i>	13mins+1 lap	2.05
5	<i>Demon Tweeks/Yokohama Classic Stock Hatch Championship</i>	13mins+1 lap	2.35
6	<i>Porsche Club GB Championship</i>	25mins	3.05
7	<i>Cartek Club Enduro Series</i>	120mins	3.45
Sunday			
Practice (all 15 minute sessions)		Scrutineer	Time
7	<i>Tegiwa M3 Cup + M-Tech Brakes 330 Challenge</i>	7.30	9.00
8	<i>Royal Purple Hot Hatch Championship</i>	7.50	9.25
9	<i>Gala Performance Toyota MR2 Championship</i>	8.10	9.45
Races (ALL races green flag lap from assembly area)		Duration	Time
8	<i>Aim Technologies Bikesports Championship</i>	18mins+1 lap	10.10
9	<i>Heritage Parts Centre Formula Vee Championship</i>	13mins+1 lap	11.10
10	<i>Tegiwa M3 Cup + M-Tech Brakes 330 Challenge</i>	18mins+1 lap	11.40
11	<i>Royal Purple Hot Hatch Championship</i>	13mins+1 lap	12.15
12	<i>Gala Performance Toyota MR2 Championship</i>	13mins+1 lap	12.45
Lunchbreak			
13	<i>Endurance Financial RGB Sports 1000 Championship</i>	23mins+1 lap	2.00
14	<i>Demon Tweeks/Yokohama Classic Stock Hatch Championship</i>	13mins+1 lap	2.40
15	<i>Aim Technologies Bikesports Championship</i>	18mins+1 lap	3.10
16	<i>Tegiwa M3 Cup + M-Tech Brakes 330 Challenge</i>	18mins+1 lap	3.45
17	<i>Royal Purple Hot Hatch Championship</i>	13mins+1 lap	4.20
18	<i>Gala Performance Toyota MR2 Championship</i>	13mins+1 lap	4.50

Final Instructions – Silverstone 11th/ 12th August 2018

Entry List.

Bikesports

2 B Chris Preen
 4 B Phillip Cooper
 5 B Bruce Crawley
 6 B Sean Peters
 7 I Bill Henderson
 8 A Joe Lock
 10 A David Palmer
 11 A Adrian Reynard
 16 A Ashley Hicklin
 21 B Charles Adrian
 22 B Adrian Williams
 30 B Mark Grason
 33 A Richard Hardie
 44 B Tony Barwell
 49 B Duncan Keith
 50 A Doug Carter
 55 A Chris Bell
 95 A Richard Stables
 98 B Joe Stables

M3/330

2 M3 Daniel Pestana
 5 330 Chris Grahame
 8 330 Bill Reddrop
 10 M3 David Whitmore
 11 M3 Nick Williamson
 15 M3 Graham Crowhurst
 19 330 Paul Hutson
 25 330 Darren Ball
 26 M3 Paul Cook
 36 330 Michael Tunmore
 48 M3 Tom Coller
 50 M3 Julian McBride
 67 330 David Drinkwater
 79 330 Andrew Lightstead
 83 330 Matt Maxted
 133 M3 Sheng Ping Yuan
 177 330 Craig Emmerson

Classic Stock Hatch

1 Lee Scott
 3 Matt Rozier
 4 Andrew Thorpe
 5 Edward Cooper
 7 Derek Rozier
 11 Andy Philpotts
 12 James Haslehurst
 28 Daniel Fillingham
 34 Ben Ward
 39 Martin Rodgers
 41 Jason Wood
 62 Alan Duly
 66 David Darlington
 69 Scott Woodhead
 73 Jason Watkinson
 87 Stewart Place
 88 Martin Cayzer
 92 Rick Groom

Club Enduro

1 A Martin James
 2 A Mark Harris
 3 A Rory Hinde / Owen
 Fitzgerald
 4 B Charles Campbell /
 Graham Legget
 5 B David Roberts /
 James Roberts
 7 C Robert Carter /
 Stuart Calverley
 9 B Tony Hobson /
 Jonny Sharp
 10 C Ciaran Cooper /
 Robin Cooper
 11 A Chris Brown / Mika
 Brown
 13 B Matt Faizey
 14 B Mark Lloyd-Jones /
 George Haynes
 15 B Colin Gillespie
 16 A Andy Marston /
 Brett Evans
 24 C Lee Sharples /
 Roger Bracewell
 25 A Russell Clarke /
 Jamie Ingram
 27 C Jon Earp / John
 Munro
 30 B Joshua Leak
 33 A Luke Sedzikowski
 37 B Scott Ferguson /
 Steven Andrew
 40 A Carl Readshaw
 43 B Steve Cheetham
 44 B Stuart Daburn /
 David Trigg
 46 I Will Ashmore /
 Robert Taylor
 50 A Julian McBride
 52 C Paul Sheard /
 Steve Dolman
 58 C Stefan Nadarajan /
 Jamie Stanley
 61 A Bill Forbes / Rob
 Meredith
 68 C Ray Kearney /
 Chris Lovett
 70 C Steve Hewson /
 Matt Nossiter
 71 C David Downie
 72 C Graeme
 McMurchie / Nick Dougill
 73 B Michael Parsons /
 Lewis Ryder
 76 C Michael Downie
 77 A John Brown
 78 A Kevin Dengate /
 Chris Lovett

83 B Ben Salmon / Nick
 Starkey
 84 B Leon Bidgway /
 Andy Chapman
 87 C Andrew
 Winchester / Josh Orr
 89 C Mark Morton /
 Adam Read
 90 C Joe Cruttenden /
 Matthew Broadbent
 91 B Robert Harrison /
 Jordan Fox
 93 C Geoffrey Gouriet /
 Russel Tamplin
 95 A Andy Baylie / Luke
 Schlewitz
 98 A Stephen Cunniffe /
 Mark Jones
 101 C Nik Grove / Carlo
 Turner
 102 I Martin Duffy /
 Andrew Armstrong
 120 C Harry Buckley /
 Richard Buckley
 125 A Darren Ball
 133 A Sheng Ping Yuan
 172 A Matthew Wallis /
 Simon Wallis
 Formula Vee
 4 Ian Jordan
 5 Paul Taylor
 6 Graham Gant
 8 Tim Probert
 9 B R. Waddingham
 11 Rik Lanyi
 14 Ian Rea
 15 Mike Oldknow
 18 B James Cater
 21 Jason Chatten
 22 Dave Wallis
 23 Alexander Jones
 24 Daniel Hands
 27 John Hughes
 28 Sam Engineer
 31 B Martin Snarey
 36 Neil Aldridge
 41 B Andrew Cooper
 47 Matt Topham
 50 Steve Ough
 51 Peter Belsey
 56 Christian Goller
 57 B Jamie Harrison
 59 B Chris Wilsher
 62 David Leniewski
 63 Michael Richards
 66 B Philip Waterhouse
 72 Colin Gregory
 75 Mark Egan
 76 Ed Lowndes
 77 B James Harridge

Final Instructions – Silverstone 11th/ 12th August 2018

80		Peter Cann	70	C	Stuart Brierley
83	B	Vaughn Jones	78	B	Pete Seely
88		Francis Twyman	79	C	Jonathan Grimes
92		Craig Pollard	82	B	Andrew Ruthven
94		Maurice Gloster	85	A	Philip O Halloran
			86	B	Oliver Thoday
			87	A	Neale Hurren
			88	C	Mick Nicholls
			99	A	Gareth Baxter

Hot Hatch

6	C	Paul Cockerell
8	A	Jonathon Swift
10	C	Charlie Collins
12	A	Martin Ward
14	B	David Sadowski
21	C	M. Winkworth
28	C	Robert Fagg
39	C	William Hornsey
42	B	Dawn Boyd
43	C	Chris Woods
45	A	Alistair Camp
46	B	Leon Shepherd
63	B	Philip Wright
74	B	Neil Stringfellow
75	C	Paul Kaynes
83	B	Christian Lyne
88	A	Stephen Sawley
89	B	Rodren Vella
94	C	Dr Evil McCarthy
96	C	William Clifford
211	I	Chris Southcott

RGB Sports 1000

1	Billy Albone
2	David Watson
14	Paul Smith
20	James Walker
21	Phil Hutchins
27	Danny Andrew
29	C. Wesemael
31	Colin Spicer
34	Stephen Dean
36	Ian Kempson
37	Drew Faulkner
44	Mark Betts
50	Tim Hoverd
54	Ryan Yarrow
63	Colin Chapman

MR2C

3	B	Ben Rowe
4	C	Peter Higton
5	B	Timothy Heron
6	B	Chris Thomas
8	B	Darren Aldworth
10	B	Gary Paterson
11	A	Adam Lockwood
14	C	Andrew Strange
16	A	Danial Farmer
17	C	Maxine Nicholls
18	B	Sam Harper
20	A	Patrick Stoner
21	B	Patrick Firmin
23	A	Adrian Barnes
24	A	Paul Lawrie
26	B	Paul Cook
27	B	Shaun Traynor
30	B	Will Powell
34	B	Shane Mansbridge
36	A	Neil Stratton
38	B	Josh Brooks
39	C	Scott Hughes
42	B	Michael Japp
44	B	Dawn Tumbridge
45	A	Dominic Earley
47	B	Wayne Lewis
49	B	David Rowe
50	A	Daniel Bryant
55	A	Dave Hemingway
66	B	A.Bowman-Smith
67	B	Simon Quinn